



Binns Road, London, W4
Guide Price £1,500,000

WHITMAN & CO.
SALES · LETTINGS · COMMERCIAL



A beautifully presented three double bedroom, two bathroom mid-terrace Victorian cottage set within the ever-popular Glebe Estate. The property offers a bright south-facing double reception room with wooden flooring, a spacious kitchen/breakfast room opening onto a private landscaped garden — ideal for entertaining and everyday family living.

Upstairs, the first floor comprises two generous double bedrooms and a stylish family bathroom and utility area, with the top floor providing a superb principal suite complete with ensuite shower room and eaves storage.

Perfectly positioned moments from Chiswick High Road, the house enjoys easy access to the array of boutique shops, cafés and restaurants the area is known for, as well as excellent transport links from Turnham Green Underground Station (District Line) and local bus routes. The green spaces of Chiswick House and Gardens and the River Thames are also close by, making this an exceptional home in one of W4's most sought-after residential enclaves. No onward chain.



Binns Road, W4

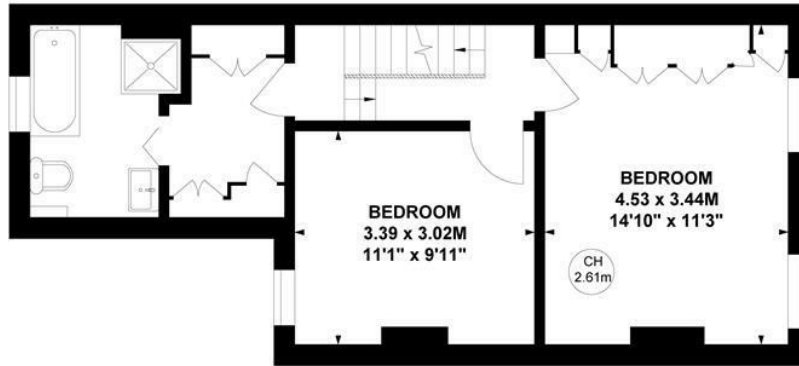
Approximate gross internal area

135.65 sq m / 1460 sq ft

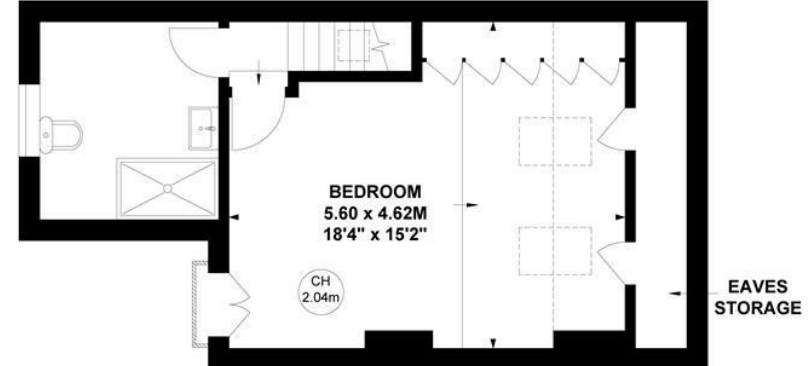
(Including Eaves Storage)

Eaves Storage : 3.34 sq m / 36 sq ft

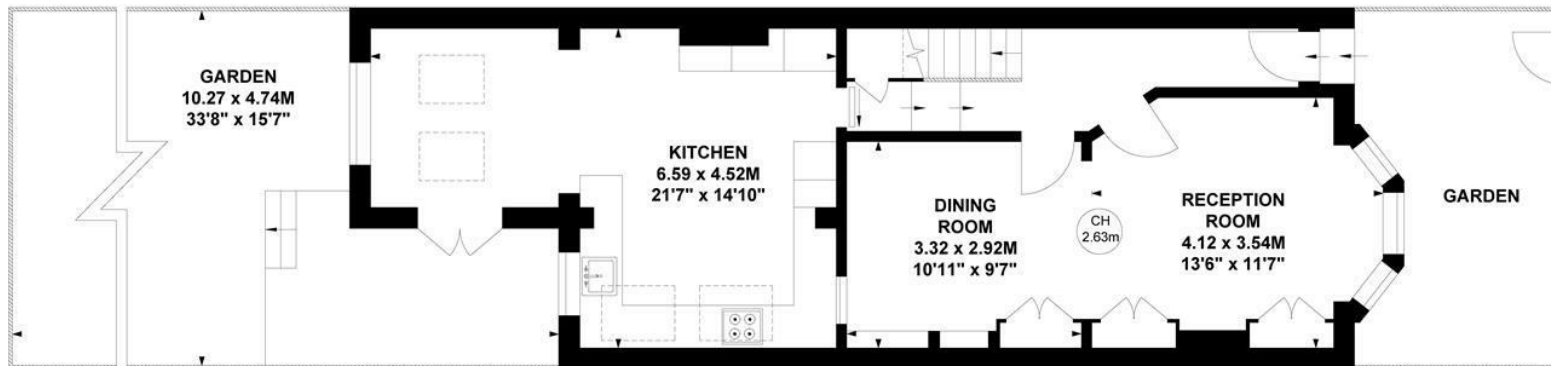
Key :
CH - Ceiling Height



First Floor



Second Floor



Ground Floor

Not to scale, for guidance only and must not be relied upon as a statement of fact.

All measurements and areas are approximate only

- Victoria terraced cottage
- Bright and airy south-facing double reception
- Three double beds/two baths

- Sought after Glebe Estate location
- Private landscaped garden
- No onward chain

Tenure - Freehold
Local Authority - Hounslow
Council Tax - Band G

